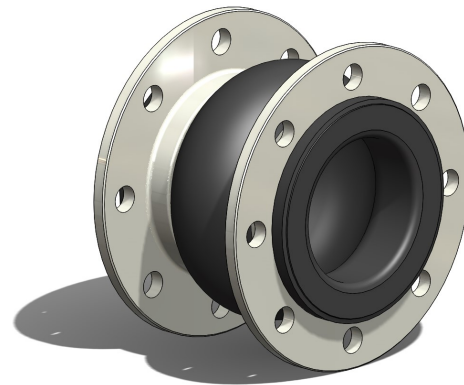
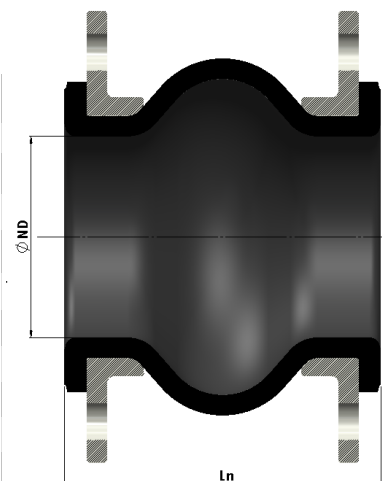


# DILATOFLEX®

## DILATOFLEX® T ES



Nominal Diameter	Nominal Length	Drilling Standards (1) NF EN 1092-1			NF EN 1759-1/ASME B16.5	Max. W.P. (**) (3)	Steel Ring Required for Vacuum Greater than ...%	Max. Permissible Movements (maximum values do not apply simultaneously)				End Thrust for P=1 bar at Ln	Approximate Weight (steel flanges PN 6)
		PN 10	PN 16	PN20 CL150				WP (bar)	Ln-Lc (mm)	Le-Ln (mm)	R (mm)		
32	1 1/4	150	X	-	16	100%	30	30	10	20	47,5	2,4	
40	1 1/2	150	X	X	16	100%	30	30	10	20	47,5	2,6	
50	2	150	X	X	16	30%	30	30	10	20	37,5	3,2	
65	2 1/2	150	X	X	16	30%	30	30	10	20	42,5	3,8	
80	3	150	X	X	16	30%	30	30	10	20	67,5	4,3	
100	4	150	X	X	16	30%	30	30	10	20	100	5,5	
125	5	150	X	X	16	30%	30	30	10	10	145	7,2	
150	6	150	X	X	16	30%	30	30	10	10	212,5	9,2	
175	6	150	X	X	16	30%	30	30	10	10	212,5	10,8	
200	8	150	X	X	16	30%	30	30	10	10	402,5	12,2	



- 1) Other drillings available (e.g. PN 6, PN 25, PN40, CL300, B.S.10D, B.S.10E). Floating flanges in zinc-chromated or stainless steel (316L).
- 2) Limited to the nominal pressure of the used drilling standard.
- 3) Particular cases:  
**Working pressure : 25 bar, maximum working temperature limited to 70°C**  
**Working pressure : 16 bar, maximum working temperature limited to 140°C**
- 4) Lateral exceptional displacements : 30 mm for 100 cycles

### Inner lining grade and working temperature

ES	-35 °C +70 °C/140 °C
----	-------------------------