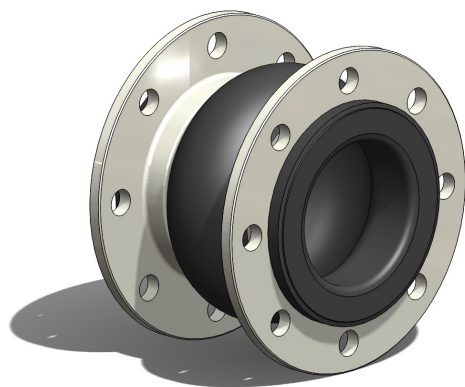
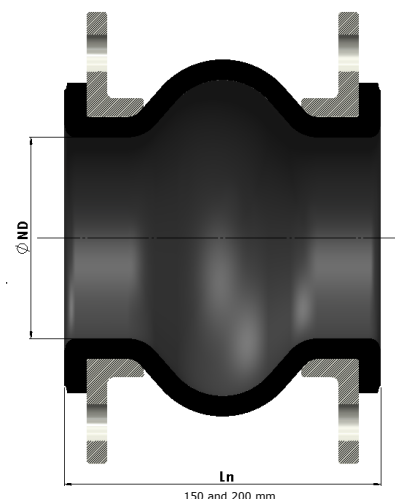


DILATOFLEX®



DILATOFLEX® T

| Nominal Diameter | Nominal Length (Ln) | Drilling Standards (1) | | NF EN 1759-1/ASME B16.5 | Max. W.P. (**) | Steel Ring Required for Vacuum Greater than ...% | Max. Permissible Movements (maximum values do not apply simultaneously) | | | | End Thrust for P=1 bar at Ln | Approximate Weight (steel flanges PN16) |
|------------------|---------------------|------------------------|-------|-------------------------|----------------|--|---|------------|---------|-------------|------------------------------|---|
| | | NF EN 1092-1 | | | | | Compression | Elongation | Lateral | Angular | | |
| ND | Ln (mm) | PN 10 | PN 16 | PN20 CL150 | WP (bar) | | Ln-Lc (mm) | Le-Ln (mm) | R (mm) | α° (degree) | (daN) | (kg) |
| 32 | 1 1/4 | 150 | X | - | 16 | 100% | 30 | 30 | 30 | 20 | 48 | 2,4 |
| 40 | 1 1/2 | 150 | X | X | 16 | 100% | 30 | 30 | 30 | 20 | 48 | 2,6 |
| 50 | 2 | 150 | X | X | 16 | 30% | 30 | 30 | 30 | 20 | 38 | 3,2 |
| 65 | 2 1/2 | 150 | X | X | 16 | 30% | 30 | 30 | 30 | 20 | 43 | 3,8 |
| 80 | 3 | 150 | X | X | 16 | 30% | 30 | 30 | 30 | 20 | 68 | 4,3 |
| 100 | 4 | 150 | X | X | 16 | 30% | 30 | 30 | 30 | 20 | 100 | 5,5 |
| 125 | 5 | 150 | X | X | 16 | 30% | 30 | 30 | 30 | 10 | 145 | 7,2 |
| 150 | 6 | 150 | X | X | 16 | 30% | 30 | 30 | 30 | 10 | 213 | 9,2 |
| 150 | 6 | 200 | X | X | 16 | 30% | 30 | 30 | 30 | 10 | 213 | 11 |
| 175 | | 150 | X | | 16 | 30% | 30 | 30 | 30 | 10 | 310 | 10,8 |
| 200 | 8 | 150 | X | X | 16 | 30% | 30 | 30 | 30 | 10 | 403 | 12,2 |
| 200 | 8 | 200 | X | X | 16 | 30% | 30 | 30 | 30 | 10 | 403 | 15,4 |
| 250 | 10 | 200 | X | X | 16 | 30% | 30 | 30 | 30 | 10 | 486 | 19,9 |
| 250 | 10 | 300 | X | X | 16 | 30% | 60 | 60 | 45 | 25 | 486 | 20,8 |
| 300 | 12 | 200 | X | X | 16 | 30% | 30 | 30 | 30 | 10 | 606 | 28,3 |
| 300 | 12 | 300 | X | X | 16 | 30% | 60 | 60 | 45 | 22 | 606 | 29,3 |
| 350 | 14 | 200 | X | X | 16 | 30% | 30 | 30 | 30 | 9 | 727 | 33,1 |
| 350 | 14 | 300 | X | X | 16 | 30% | 60 | 60 | 45 | 18 | 727 | 34,3 |
| 400 | 16 | 200 | X | X | 16 | 30% | 30 | 30 | 30 | 8 | 847 | 40,2 |
| 400 | 16 | 300 | X | X | 16 | 30% | 60 | 60 | 45 | 16 | 847 | 41,6 |
| 450 | 18 | 200 | X | X | 16 | 30% | 30 | 30 | 30 | 7 | 962 | 47,3 |
| 450 | 18 | 300 | X | X | 16 | 30% | 60 | 60 | 45 | 14 | 962 | 48,9 |



- (1) Other drillings available (e.g. PN 6, PN 25, PN40, CL300, B.S.10D, B.S.10E).
Floating flanges in zinc-chromated or stainless steel (316L).
(2) Limited to the nominal pressure of the used drilling standard.
(3) Particular cases:
DW grade: W.P. 12 bar at +105 °C max. and W.P. 16 bar at +90 °C max.
CC grade: W.P. 10 bar at +110 °C max. and W.P. 16 bar at +90 °C max.

Inner lining grade and working temperature

CC -35 °C
+90 °C/110 °C

DW -25 °C
+90 °C/105 °C

EPC -25 °C
+95 °C

AR/CN -35 °C
+90 °C

GZ -20 °C
+90 °C

YP -25 °C
+100 °C

AB -35 °C
+100 °C

TE -25 °C
+100 °C

anvis Decize S.A.S.

Usine des Caillots—BP101—F-58302 DECIZE CEDEX

✉ dilatoflex@anvisgroup.com — www.dilatoflex.com

anvis